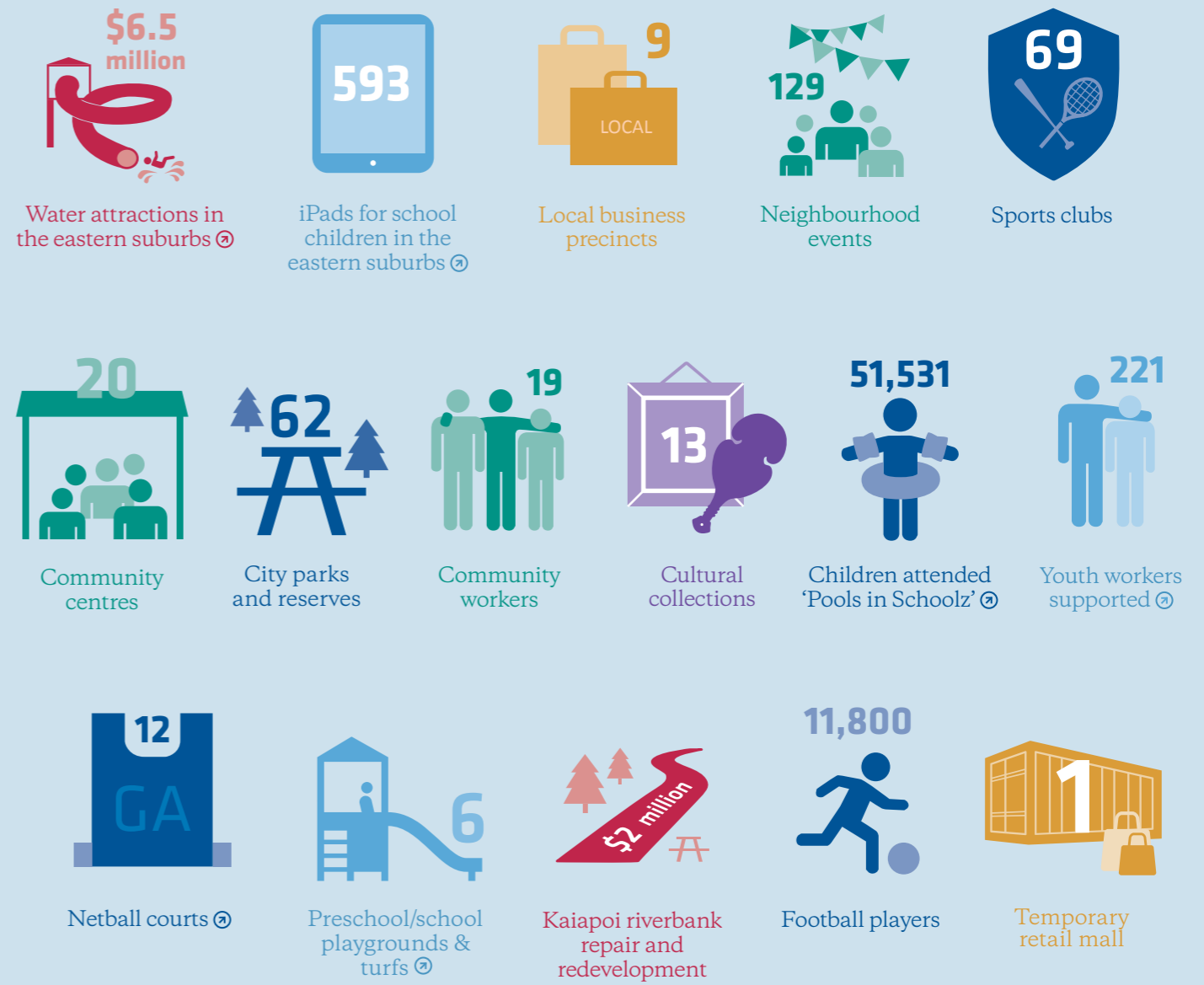


GRANT HIGHLIGHTS

to 30 June 2014



Donor-directed stamp
Wherever you see this stamp or the @ icon, this identifies a project as being donor-directed or contributed to by one or more of our generous donors.

- Portfolio key**
- Large Permanent Projects
 - Community Permanent Projects
 - Economic Revitalisation
 - Hardship / Spiritual & Faith
 - Education / Youth
 - Sport & Recreation
 - Heritage & Culture
 - Donor-directed @